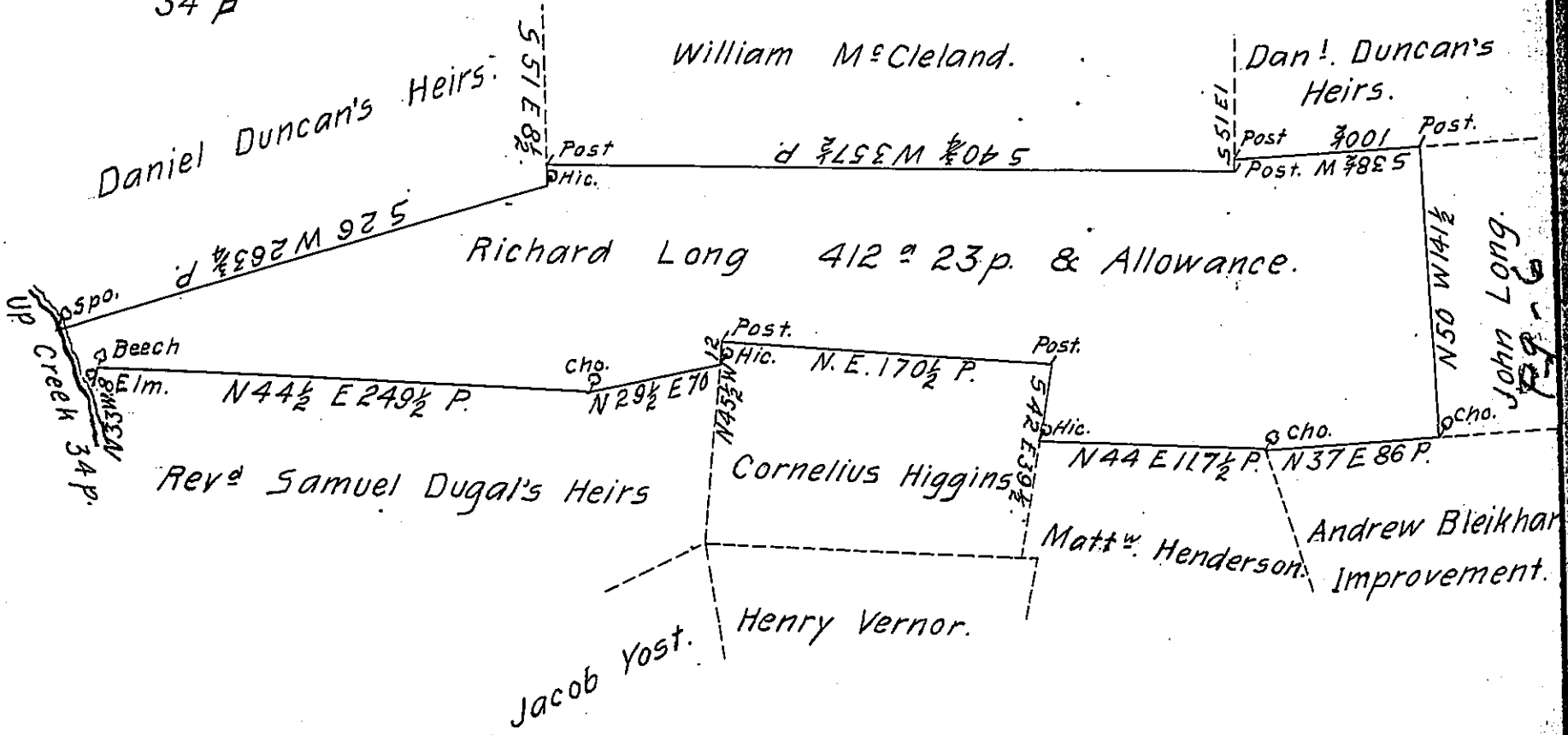


Courses on the Creek.

586° E 18 p
565 E 10
N77 E 6
34 p



A Draft of a Tract of Land situate in Fannet Township in
 the County of Franklin Containing four hundred and twelve
 Acres and twenty three Perches and the Allowance of Six
 p. Cent for Roads &c. Surveyed November 10th 1794 in
 pursuance of a Warrant granted to Richard Long bearing
 Date the seventh Day of March 1794.

N.B. By the intervention of a small Survey
 of Cornelius Higgins, the above Survey could
 not be extended fully to its Boundaries on Matt^r Henderson D. S.
 that Quarter, so as to join Jacob Yost and
 Henry Vernor.

M. H.

To Daniel Brodhead Esquire
 Surveyor General of Pennsylvania }

IN TESTIMONY that the above is a copy of the original remaining on file in
 the Department of Internal Affairs of Pennsylvania, made
 conformably to an Act of Assembly approved the 16th day of
 February, 1833, I have hereunto set my Hand and caused
 the Seal of said Department to be affixed at Harrisburg,
 this twentieth day of July 1905.

George R. Brown
 Secretary of Internal Affairs.